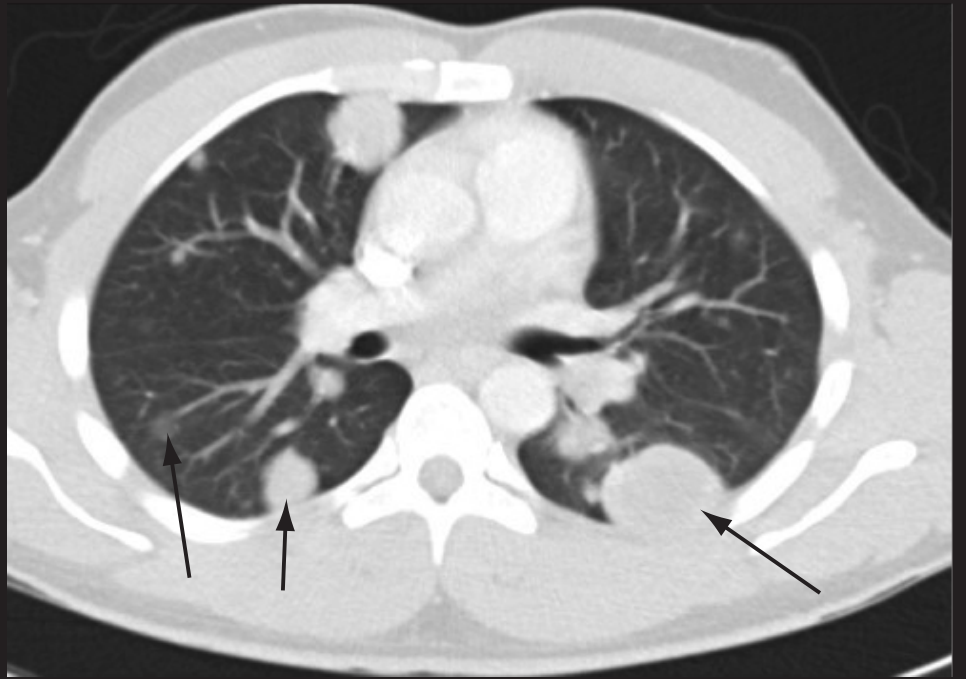


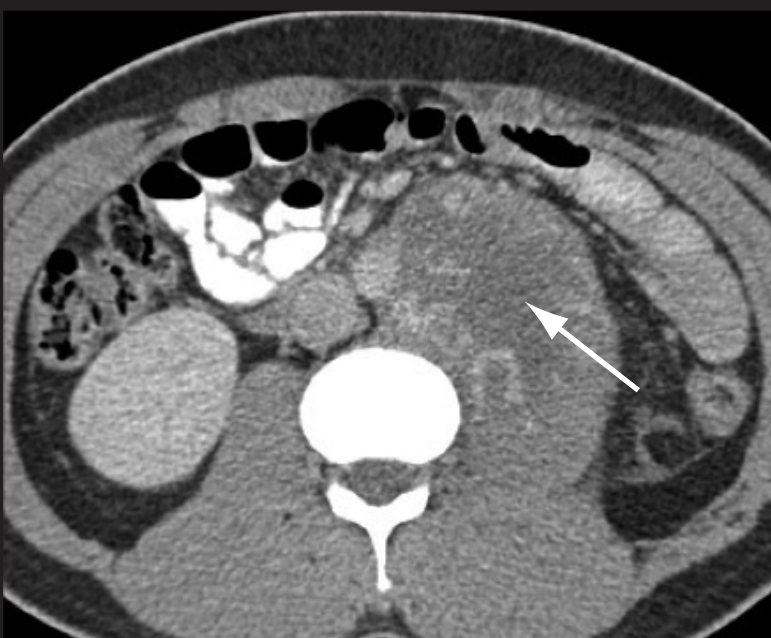
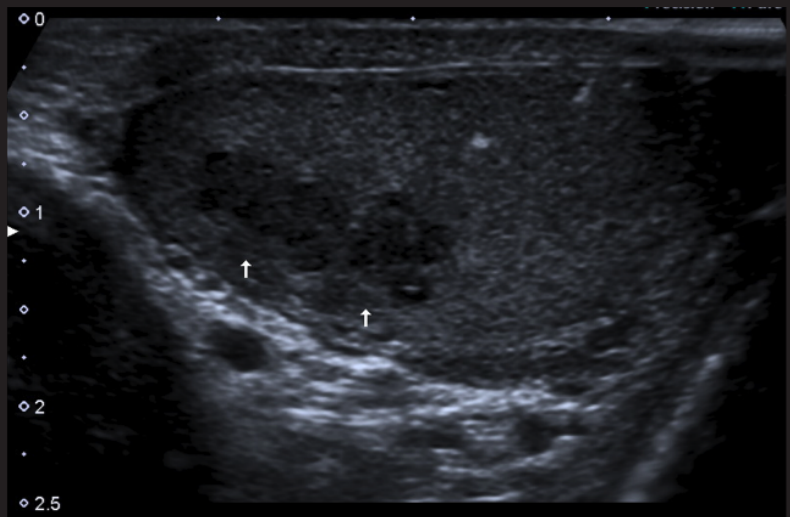
## Metastatic testicular germ cell tumour

A 30 year old man who presented with haemoptysis secondary to metastases from a germ cell tumour. AFP 550 (NR 0-10kU/L),  $\beta$ HCG 75000 (NR 0-4U/L)

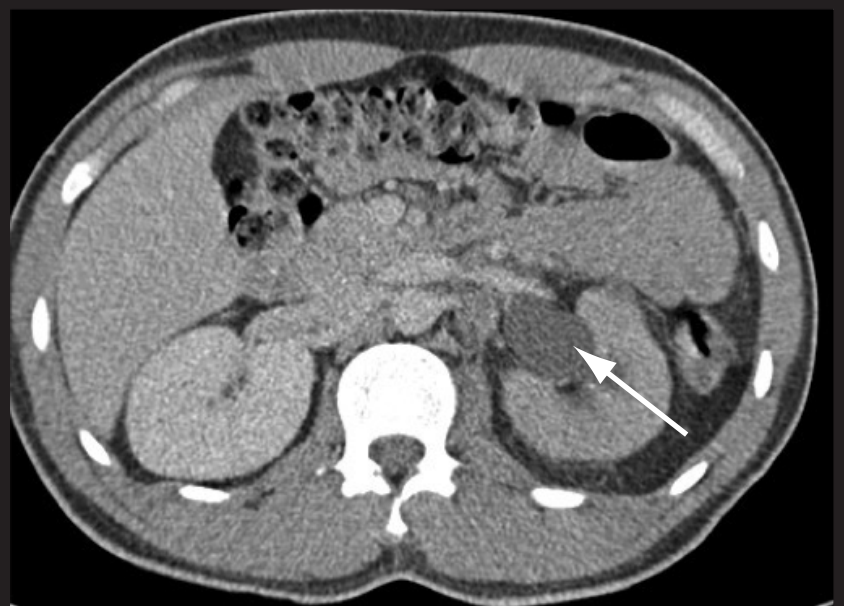


Metastatic disease in the lungs on chest x-ray (left) and thoracic CT (right)

Ultrasound of testis showing enlarged mass with hypoechoic elements typical of a germ cell tumour



Left para-aortic nodal mass



Left hydronephrosis secondary to ureteric obstruction by nodal mass